

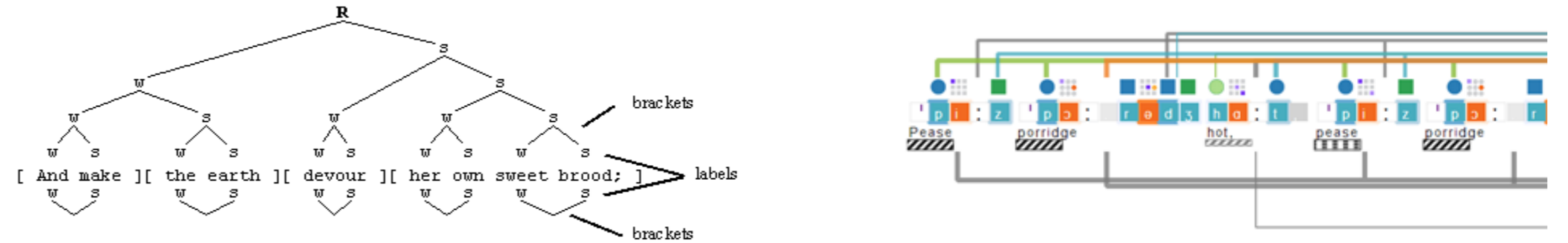
Elena González-Blanco¹ | Gimena del Río² | Clara I. Martínez Cantón¹

1 | Universidad Nacional de Educación a Distancia (UNED, Spain) 2 | Consejo Nacional de Investigaciones Científicas y Técnicas (CONICET, Argentina)

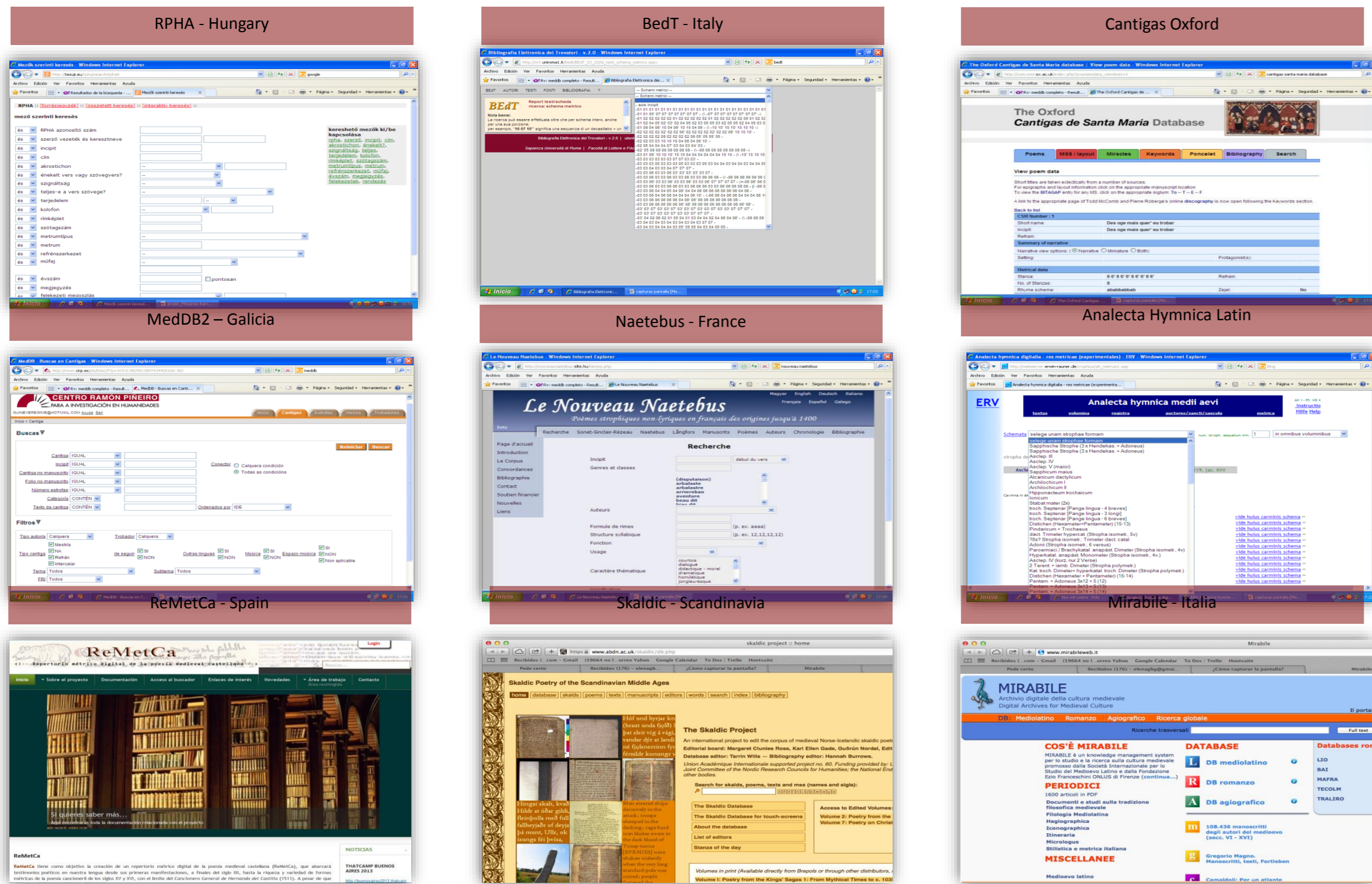
How to encode poetry?



El-de-SEO-po-pu-LAR-se-RÁ-cum-PLI-do.
(3-6-8-10)

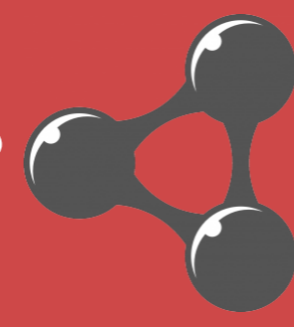


State of the Art of digital poetry: lack of standardization



- Heterogeneous theoretical traditions
- Heterogeneous repertoires and databases

Why?



- Common conceptualization
- Based on metadata added to existing databases
- Not altering the internal structure of each repertoire
- Code is published as linked data available on the web
- Extensible and flexible model

Our poetic ontology proposal

Based on:

- Remetca Repertoire
- Common fields of other repertoires

Re-Using:

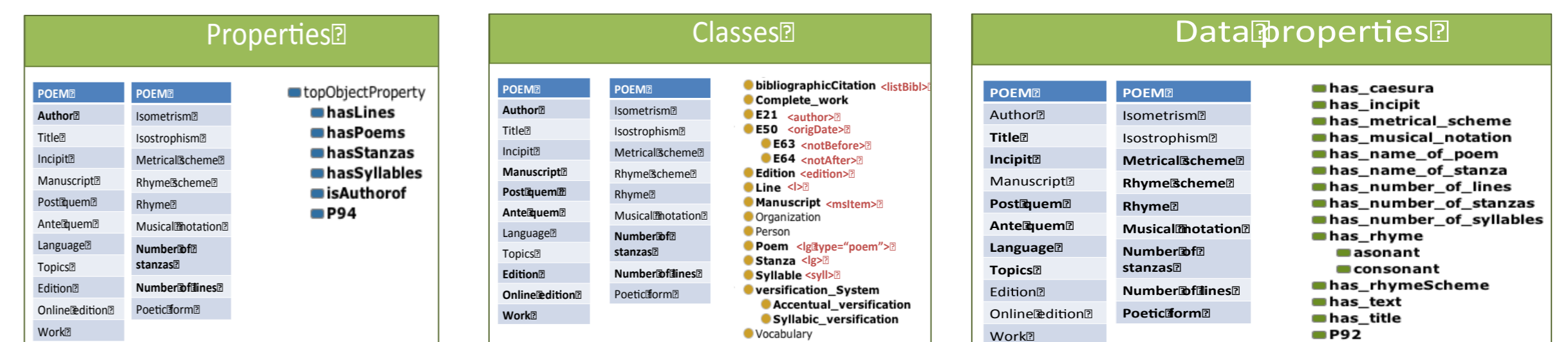
- The CIDOC Conceptual Reference Model (CRM)
- XML-TEI Tags for poetry and metrics
- DublinCore
- Other standards and vocabularies



First published in:

- <http://datahub.io/dataset/ReMetCa-ontology>
- <http://lov.okfn.org/dataset/lov/vocabs/ReMetCa>

Structured in:



Existing projects = heterogeneous technology

- Different structure and levels of complexity
- Different content (by kind, time period, etc)
- Different technological systems:
 - SQL databases
 - Proprietary RDBMS systems
 - XML tagged text
- Different levels of access



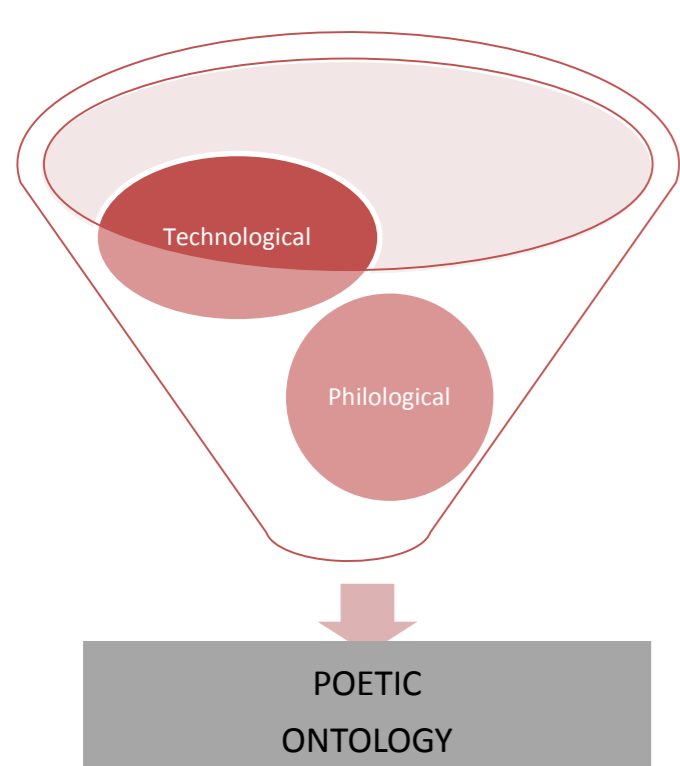
Our purpose

Interconnect and reuse data disseminated across existing poetic repertoires to make it easily retrievable



Publishing online repertoires in a structured format and by open standards in order to build an open-source and collaborative platform based on a poetic ontology which facilitates interoperability among the different European metrical repertoires

Our solution for interoperability and standardization



Building a conceptual model = ontology
Which includes...

- Metadata
- Vocabularies
- Properties
- Relations

Conclusion

An ontology as a solid semantic structure as a basis to link the different poetic systems, not just a repository of datasets, thesauri or controlled vocabularies.

If you want to know more...



egonzalezblanco@flog.uned.es
cimartinez@flog.uned.es
gdelrio.riande@linhd.uned.es